

CERTIFICATE OF LOCATION OF GOVERNMENT CORNER

NORTH QUARTER Corner of Section 9, Township 106, Range 42, 5TH P.M.

STATE OF MINNESOTA, County of MURRAY

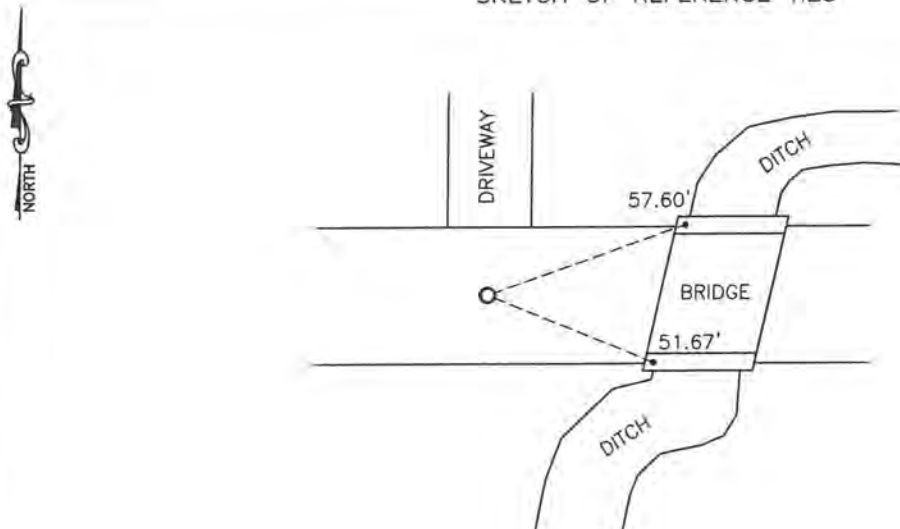
At the corner location shown on the sketch:

On _____ found a _____

left monument as found, lowered monument, removed monument (explain)

On 5/4/14 placed a 5/8" iron w/seal #50343

SKETCH OF REFERENCE TIES



Minnesota State Plane Coordinate System Murray County Datum NAD83 (1996)

N: 158274.887
E: 466571.585

Nail and survey marker in north bridge guide post NE 57.60'
Nail and survey marker in south bridge guide post SE 51.67'

Statement of evidence relative to this corner location is on back of page.

I hereby certify that this document and the data contained herein was prepared by me or under my direct supervision.

[Signature] 4/21/15
SIGNATURE DATE

Registration No. 50343

Land Surveyor, Professional Engineer
 County Surveyor, County Engineer

OFFICE OF THE COUNTY RECORDER
County of _____

I hereby certify that this document was filed in the Co. Recorders office at _____ .M on the _____ day of FEB 20 2015 A.D. 20 _____

County Recorder Couelyn C. Larson

By _____, Deputy

DOCUMENT NO. _____

Statement of Evidence

In 1866, J.W. Bishop did the original subdivision of the township.

On June 25, 1902, J.W. Woolstencroft recorded a 10"x12"x18" stone at the corner.

On May 4, 2014, Bueltel-Moseng Land Surveying set a $\frac{5}{8}$ " iron with seal #50343 midway and on line as shown on 1902 survey. We did not dig with backhoe because the location of the corner would have been in excavated area during construction of ditch and bridge.